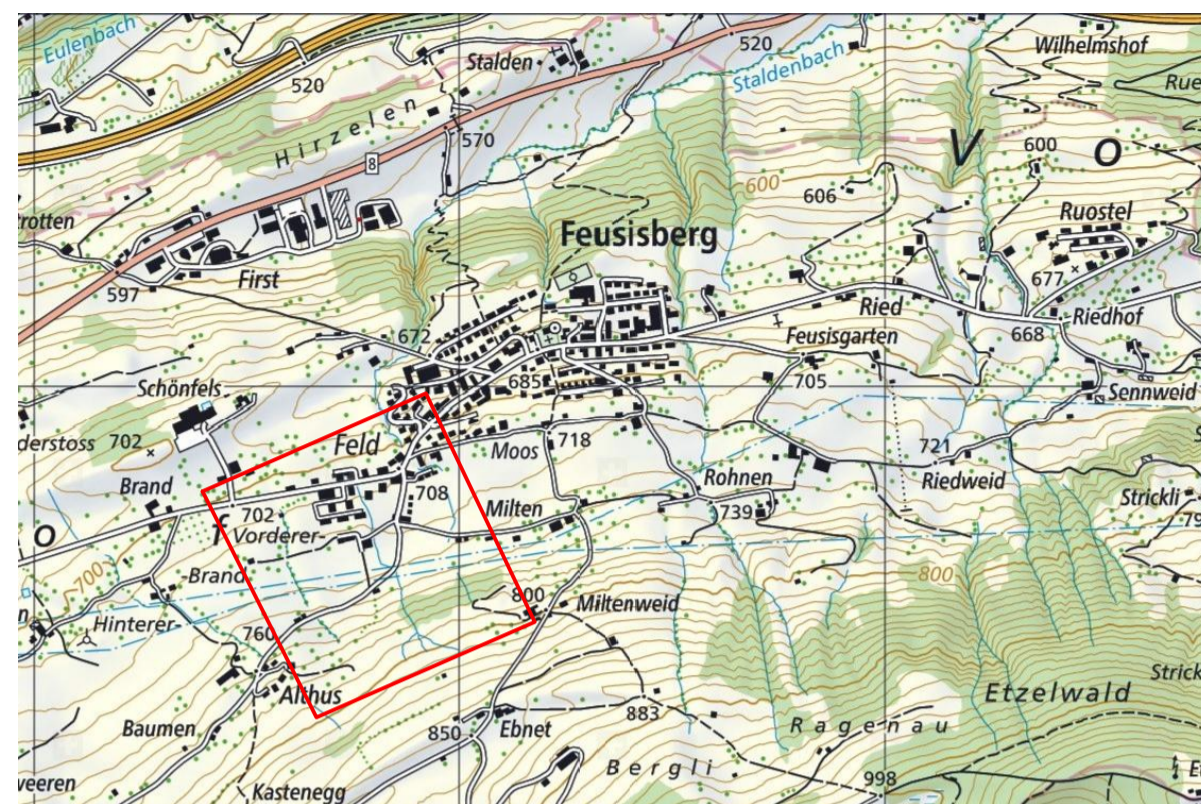
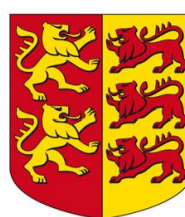




Gemeinde Feusisberg



Phase	Bauprojekt	
Bauherr	Bezirk Höfe	
Objekt	Hochwasserschutz und Revitalisierung Giessenbach	
Plan	Querprofile 1:100	Plan Nr. 1359-0301
	Giessenbäche	Format
Index	Aenderung	Dat. / Gez. 25.11.2019 / gl
		Dat. / Gepr. 25.11.2019 / sim
		Dat. / Gez. Dat. / Gepr.
		- / - - / -

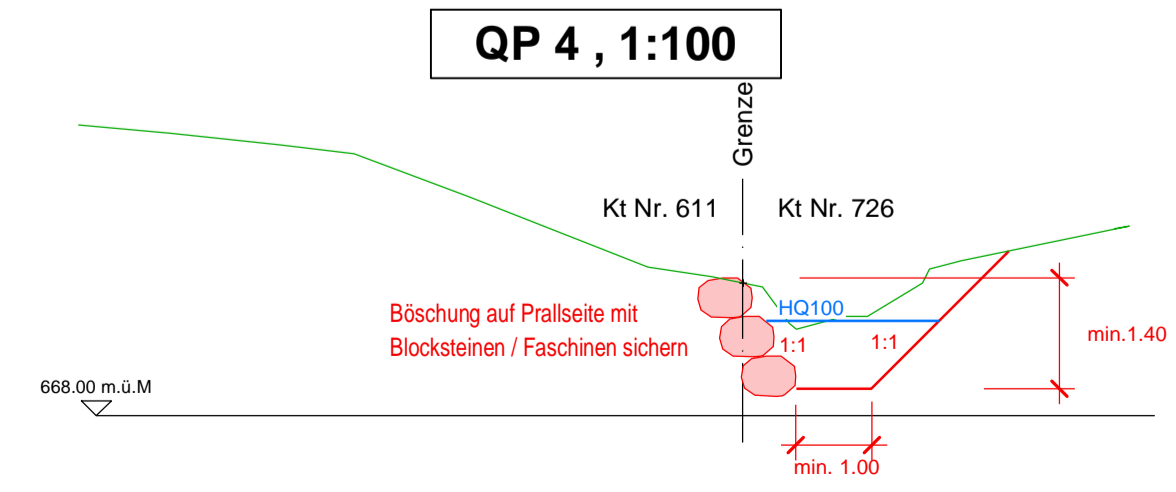
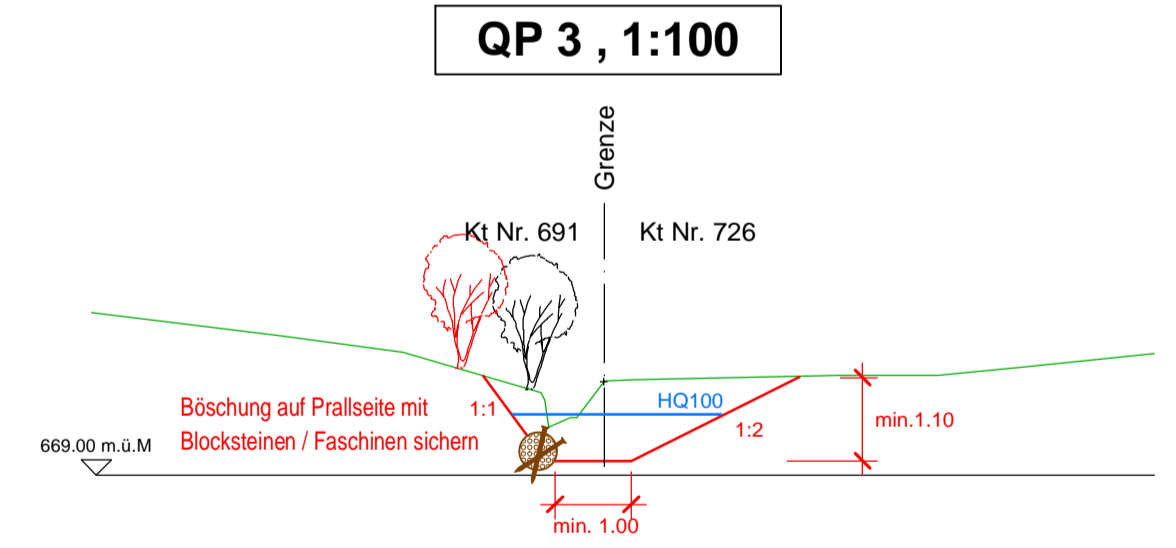
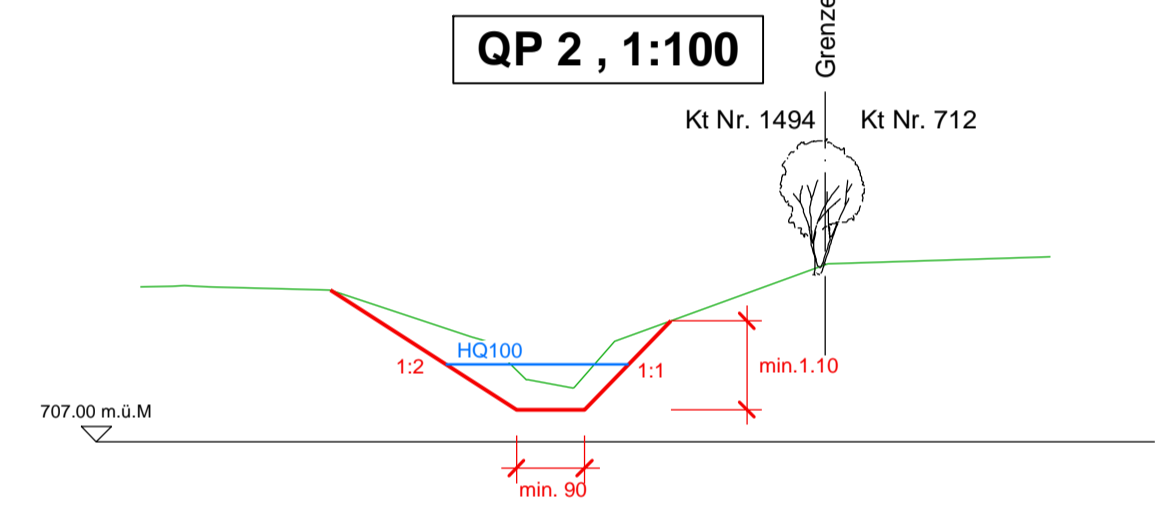
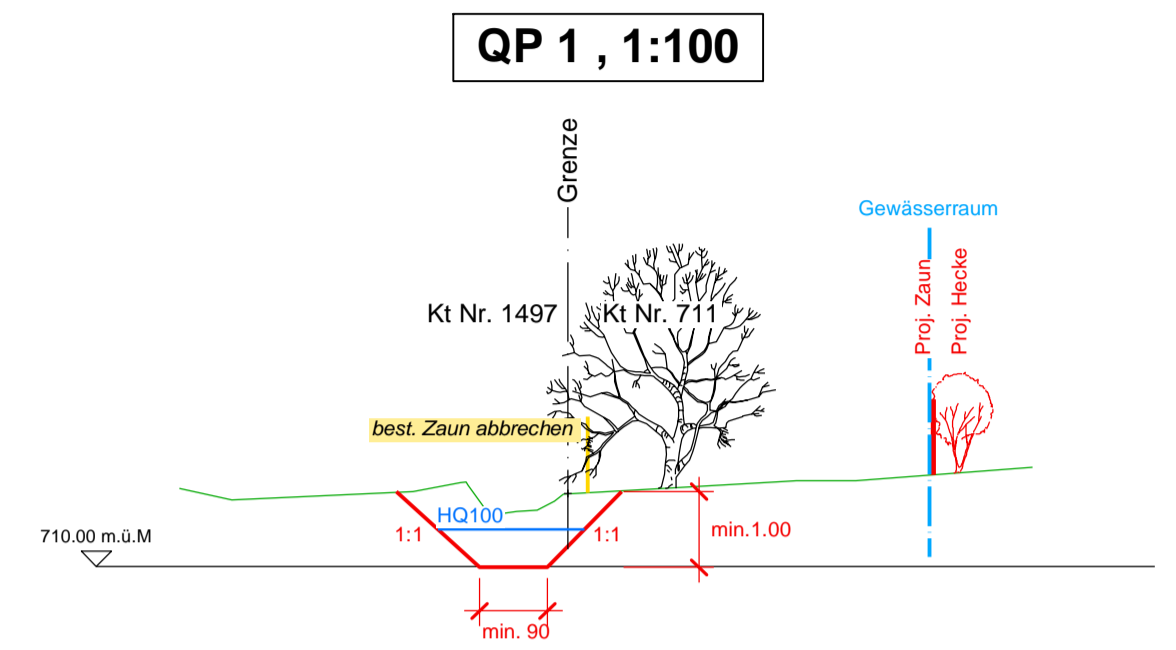
bpp INGENIEURE AG
Beratende Ingenieure ETH / SIA / USIC
Hochbau - Tiefbau - Umwelt - GIS

HAUPTSITZ	Riedstrasse 7	6430 Schwyz	fon 041 / 818 50 20
FILIALE	Kobiboden 63	8840 Einsiedeln	fon 055 / 412 36 25
FILIALE	Neuland 3	6460 Altdorf	fon 041 / 500 50 95
FILIALE	Rainstrasse 37	6314 Unterägeri	fon 041 / 811 20 44

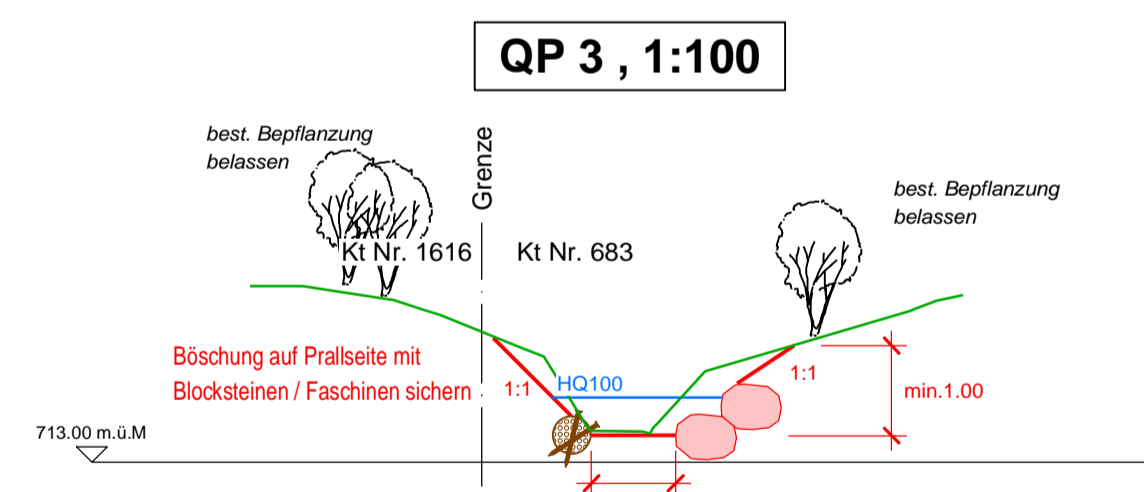
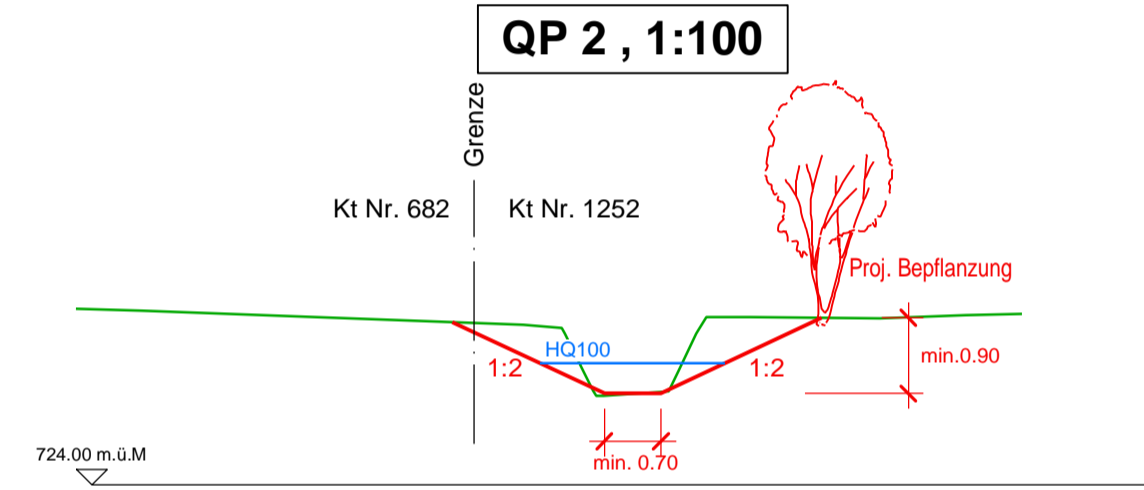
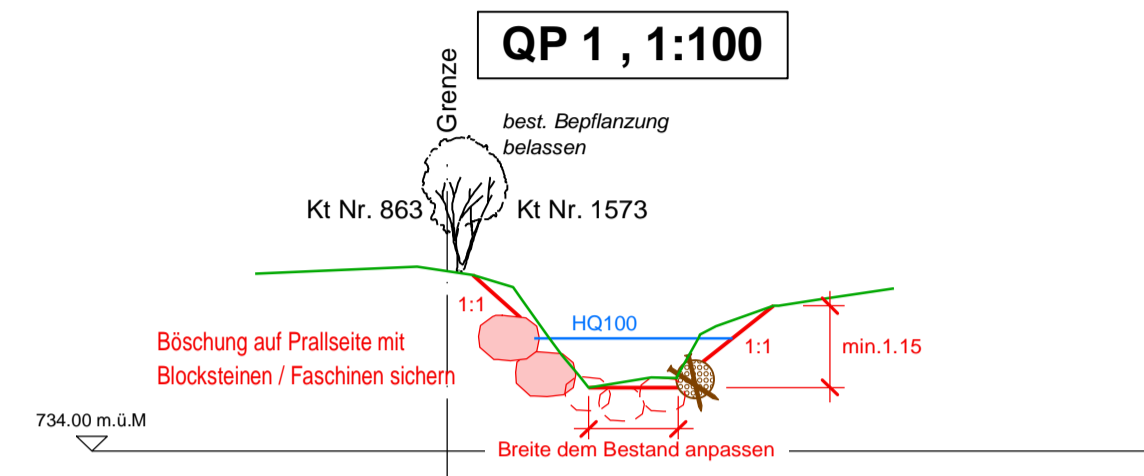
www.bpp-irg.ch

Bauherr Bezirk Höfe	Projektverfasser bpp Ingenieure Riedstrasse 7 6430 Schwyz
.....
.....
.....

Giessenbach Ost



Giessenbach Mitte



Giessenbach West

